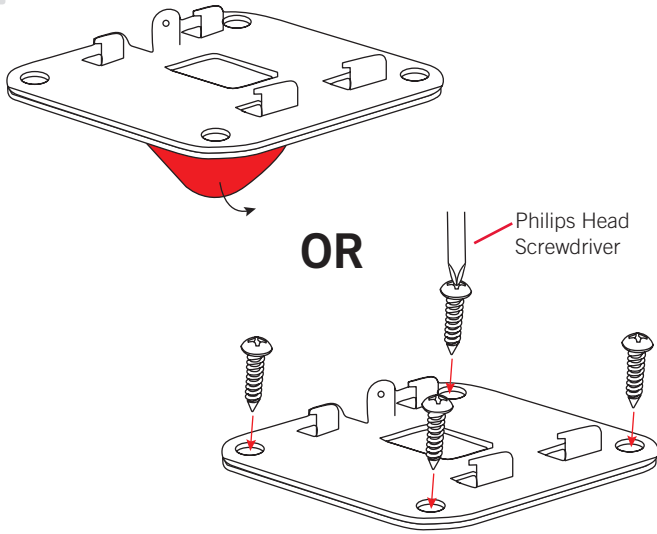
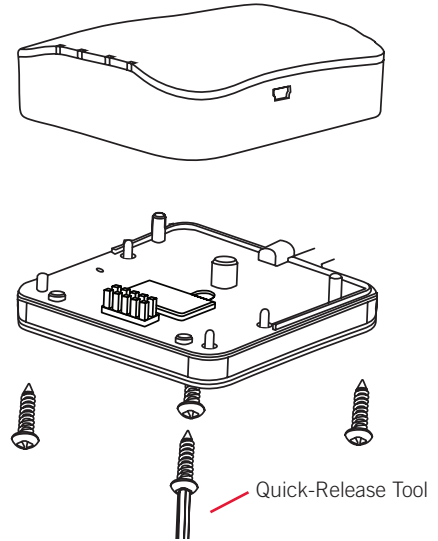


1

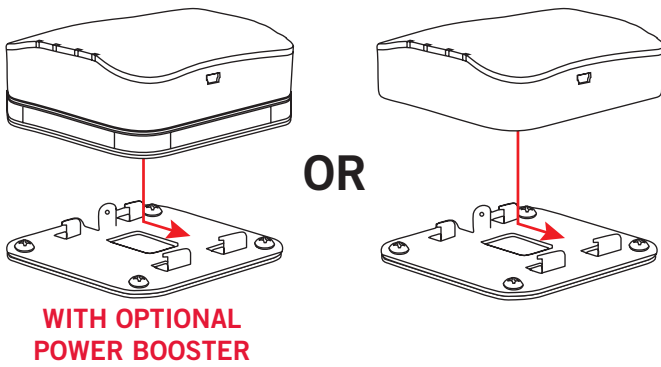


2

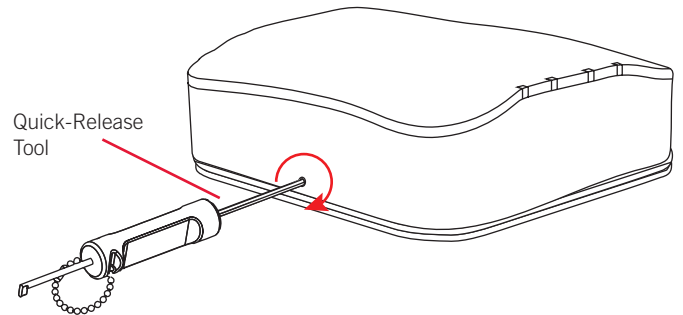
WITH OPTIONAL POWER BOOSTER



3

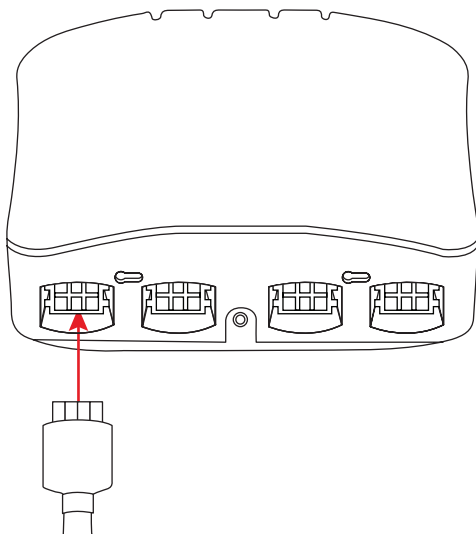


4

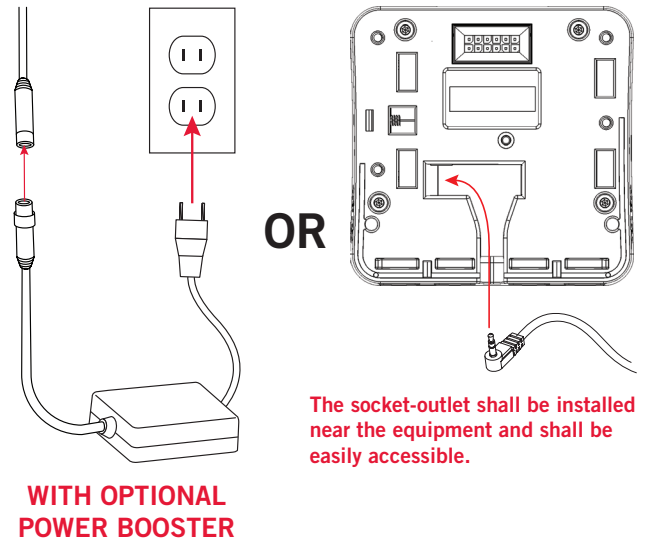


Turn clockwise to engage, **DO NOT OVERTIGHTEN.**

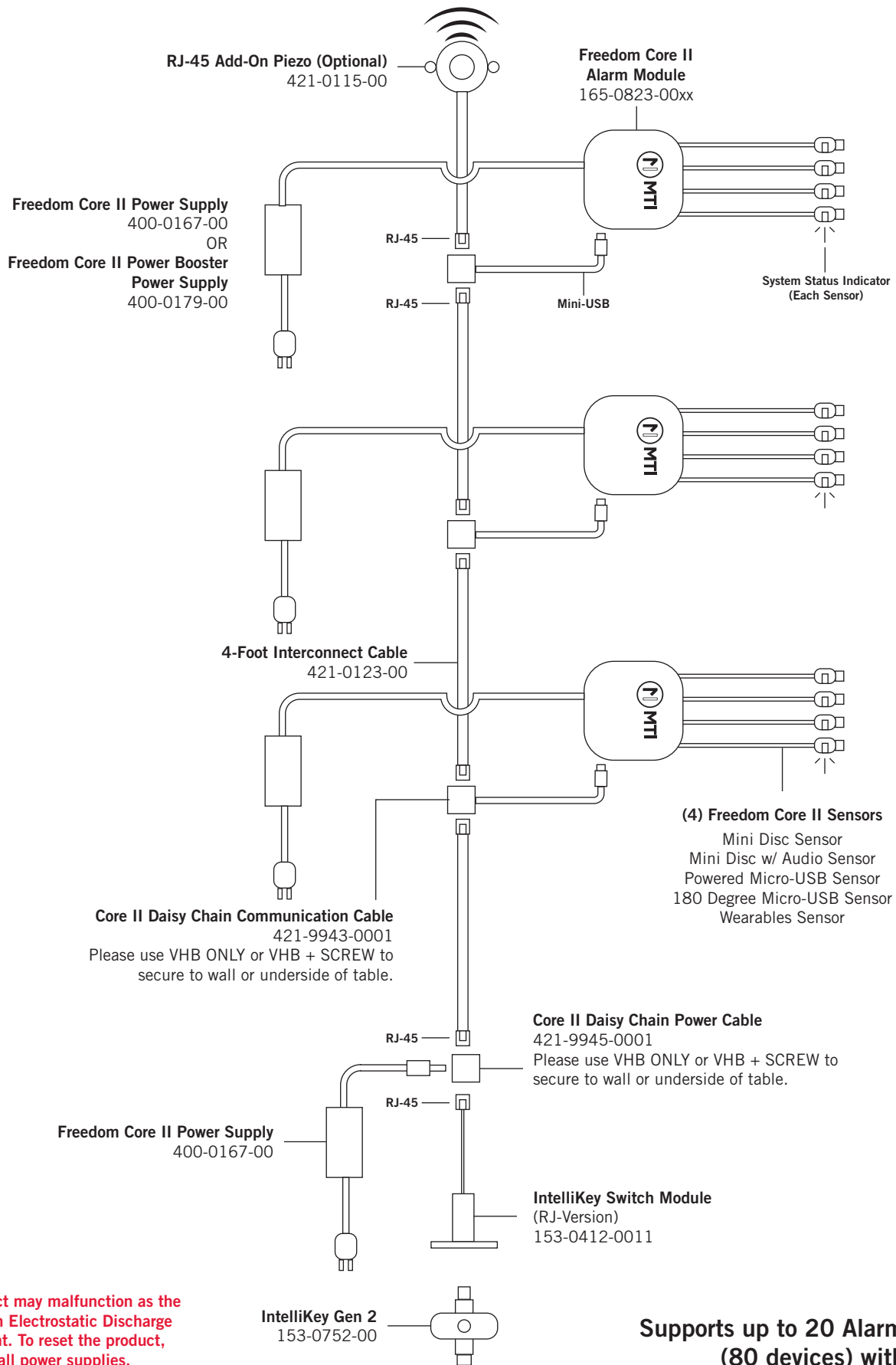
5



6



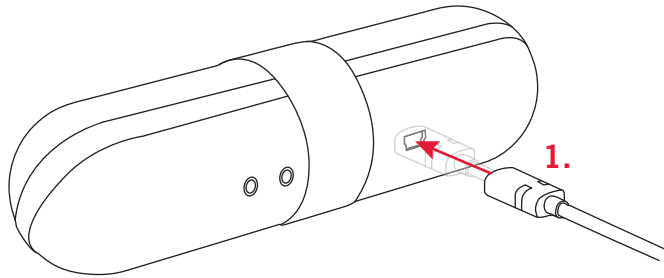
The socket-outlet shall be installed near the equipment and shall be easily accessible.



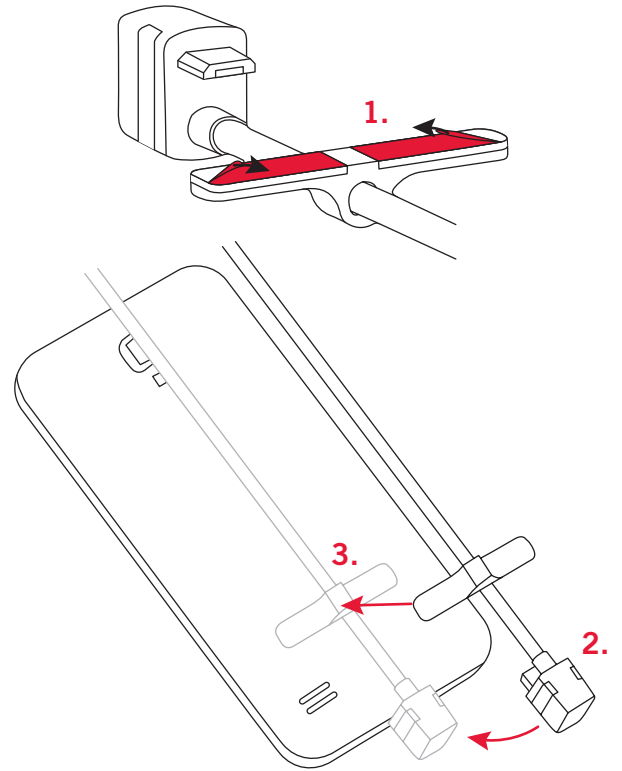
The product may malfunction as the result of an Electrostatic Discharge (ESD) event. To reset the product, reconnect all power supplies.

Supports up to 20 Alarm Modules (80 devices) with one ISM

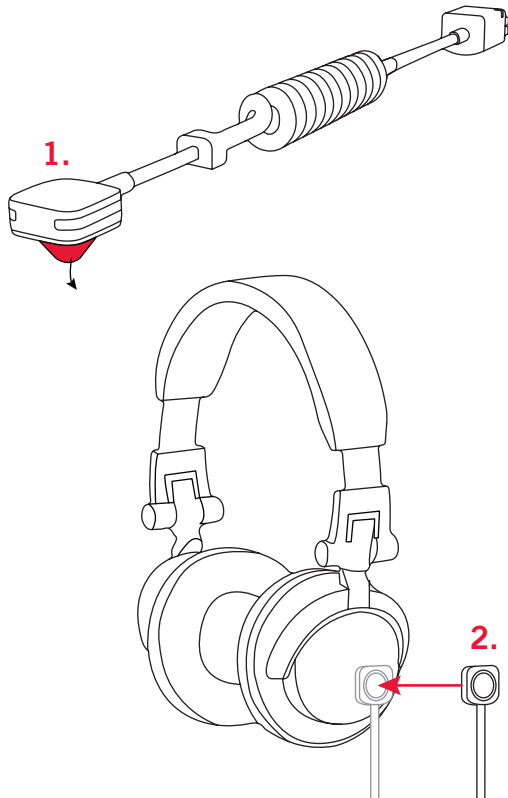
Powered Micro USB



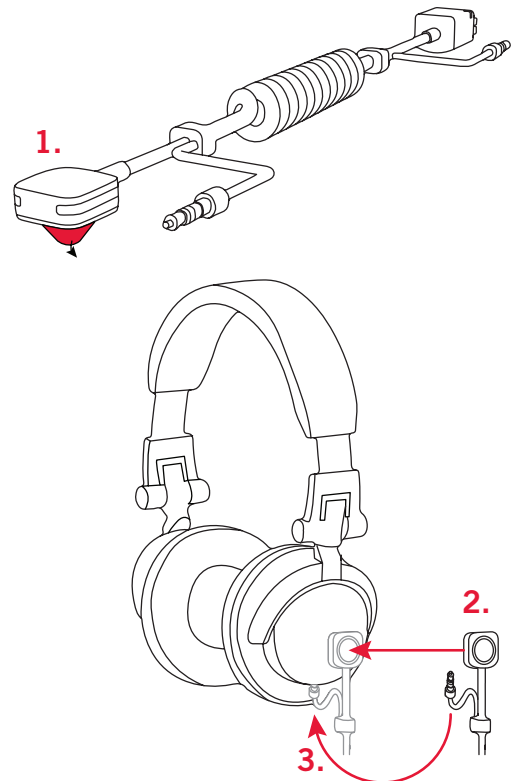
180° Micro USB



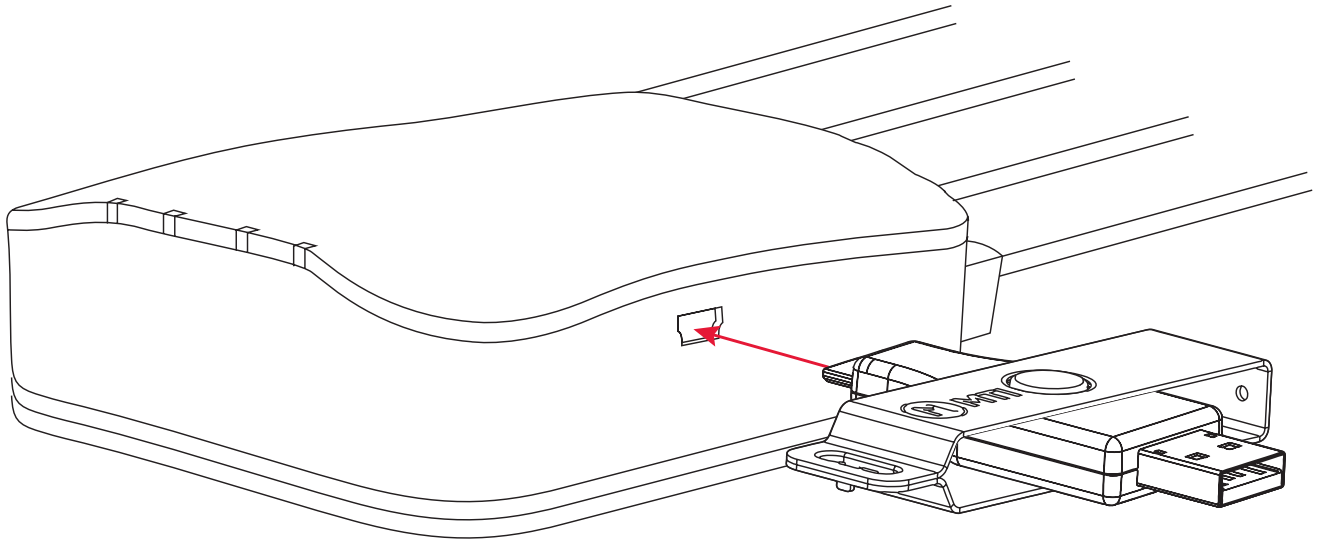
Mini-Disc Sensor



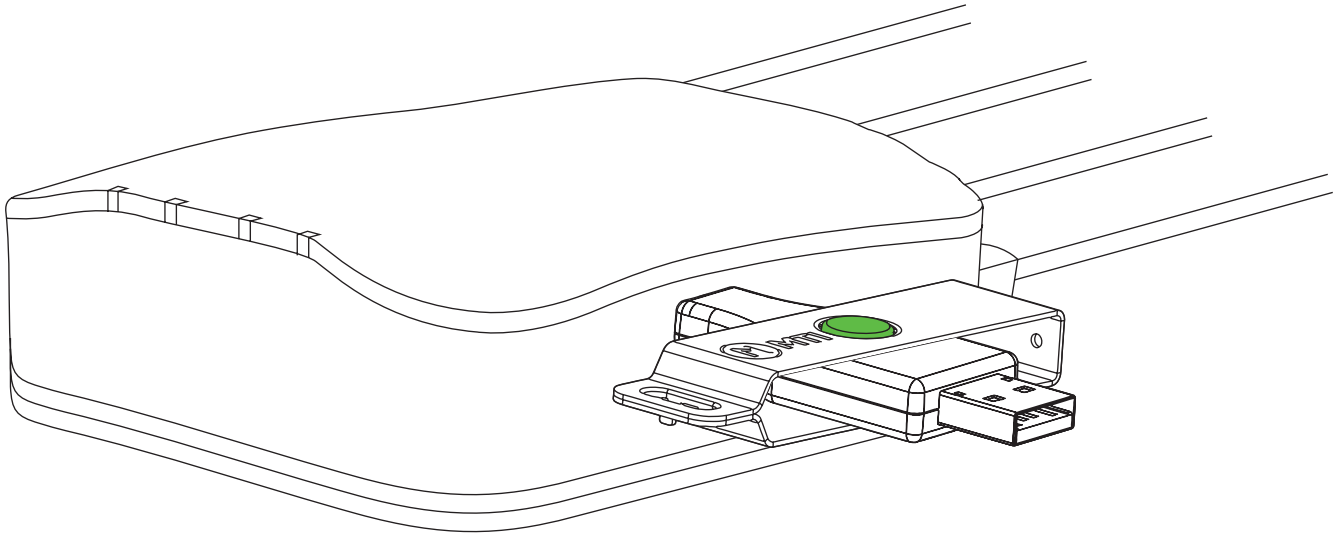
Mini-Disc with Audio Jack



1



2



3

